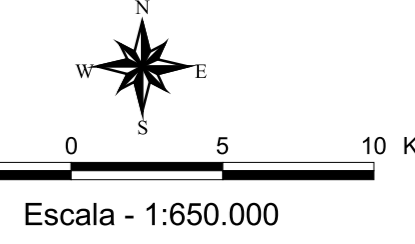


MAPA GEOLÓGICO DO PARANÁ

EDIÇÃO 2006

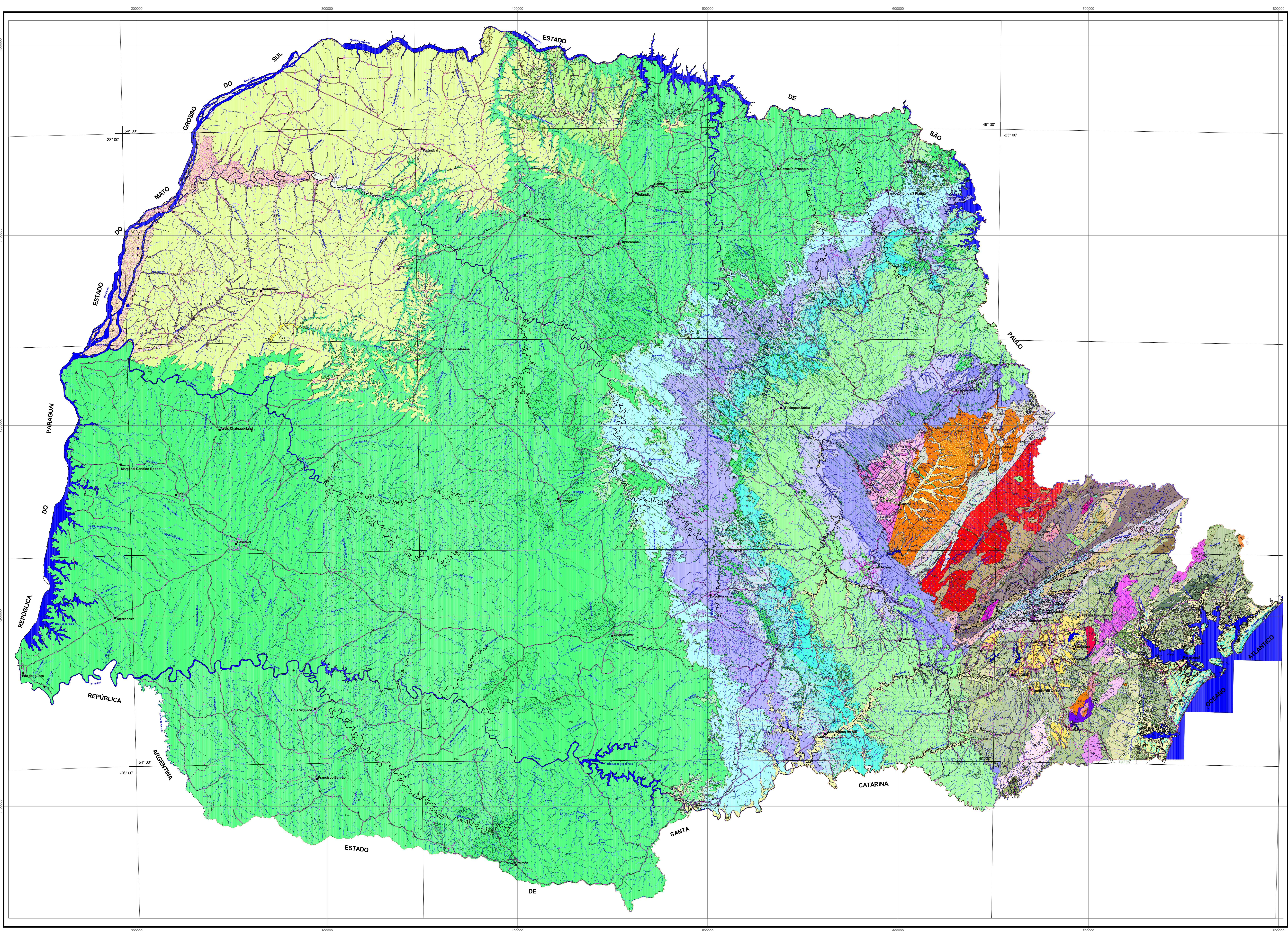


GOVERNO DO ESTADO DO PARANÁ



DESCRIÇÃO DAS UNIDADES LITOESTRATIGRÁFICAS

Table with columns for Quaternário Holoceno, Quaternário Pleistoceno, Mesozoico, Permiano-Devoniano, Proterozoico Superior, Proterozoico Inferior, and Arqueano. Each entry includes a color-coded box and a brief description of the geological unit.



CONVENÇÕES: Table listing symbols for topographic features (roads, rivers, etc.) and geological structures (faults, folds, etc.).

CARTOGRAFIA GEOLÓGICA CONSULTADA: Table listing the names and scales of various geological maps used as references for the main map.

DADOS TÉCNICOS: Includes a map of Brazil showing the location of Paraná, a detailed map of Paraná with a grid, and technical data such as the datum (SAD 69) and projection (UTM).